

SchlumbergerSema

the USB smart card platform
for e-business security



**e-gate
smart cards**

e-gate smart cards

The USB smart card platform for e-business security



Internet opportunities

Every day the Internet opens up new opportunities, transforming our lives as consumers and citizens.

As individuals, we're discovering the benefits of faster, simpler, better access to information, and we're enjoying the convenience of purchasing, trading and banking on-line. At the same time, more and more organizations are exploring the benefits of this new channel to market.

In this context, the ability to deliver high levels of security – without sacrificing ease of use for end users – is becoming an increasingly important differentiation for personal computer manufacturers, crypto-service specialists, and e-commerce service providers alike.

The smart card is clearly the ideal means of providing the digital signatures, mutual authentication and encryption required for securing on-line transactions. Millions of us rely on their capabilities already, every day, through a rapidly growing global infrastructure of ATMs and POS terminals, parking meters and payphones.

But, until now, without an infrastructure of smart card readers in place, the smart card's unquestionable superiority in Internet security cannot be delivered. Until now.

e-gate smart cards - bridging the public and private worlds

e-gate* smart card technology bridges the gulf between the public terminal infrastructure, based on the ISO standard, and the USB (Universal Serial Bus) world of the personal computer.

An e-gate card incorporates the USB interface electronics normally resident in the smart card reader, on the card itself. So the e-gate cards contacts can be connected directly into the USB port on the personal computer, via a simple passive connector. That takes the cost of buying, deploying and installing smart card readers out of the equation and cuts initial investment and lifecycle costs.

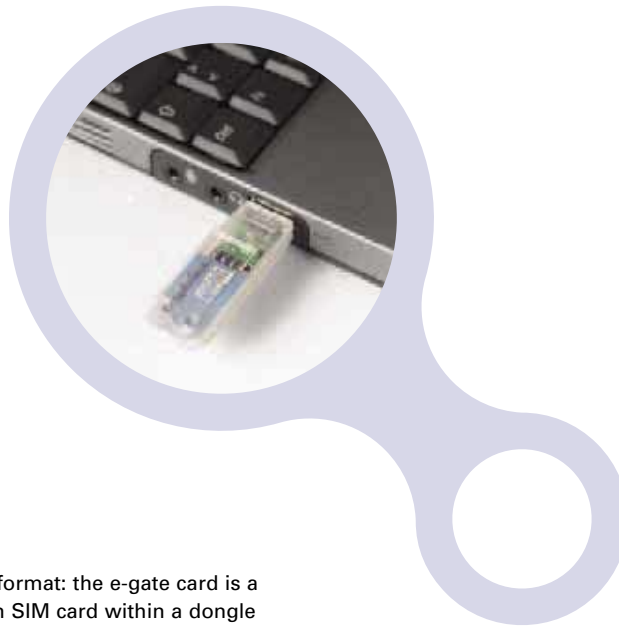
It also incorporates the conventional ISO 7816-3 smart card interface, enabling the same card to be used in the one-to-many public terminal infrastructure. Giving individuals a truly universal smart card, equally at home in the ISO and the USB worlds.



e-gate smart cards features and benefits

- Users treat e-gate cards like any other USB peripheral – self-powered, it offers all the ease and convenience of hot-pluggable, plug & play operations at the personal computer. It offers the ease of installation on the platform as any new USB peripheral is automatically recognized by the PC and dynamically installed.
- It also delivers the full advantage of the speed of the USB (with the capacity to connect 127 devices, the USB v1.1 supports transfer rates from 1.5Mb/s to 12Mb/s).
- At the same time, ISO compatibility means e-gate cards can be used with a whole range of conventional smart card terminals – the card recognizes automatically which protocol to use.
- e-gate cards as conventional smart cards can be personalized in an industrial manner taking advantage of the USB protocol.





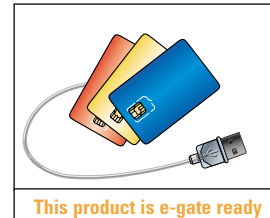
2 ways to connect e-gate to the PC USB port

To meet the requirements of different personal computer applications, two types of connectors are provided:

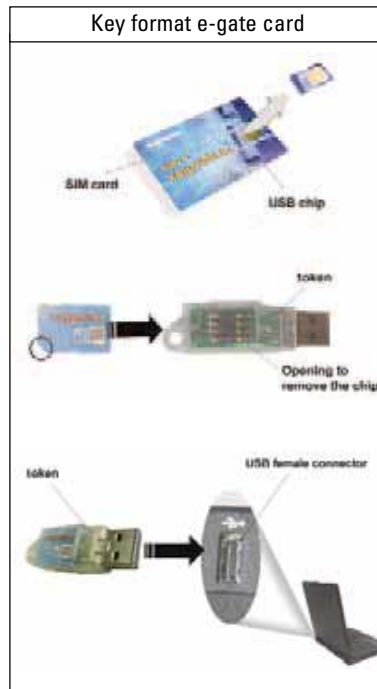
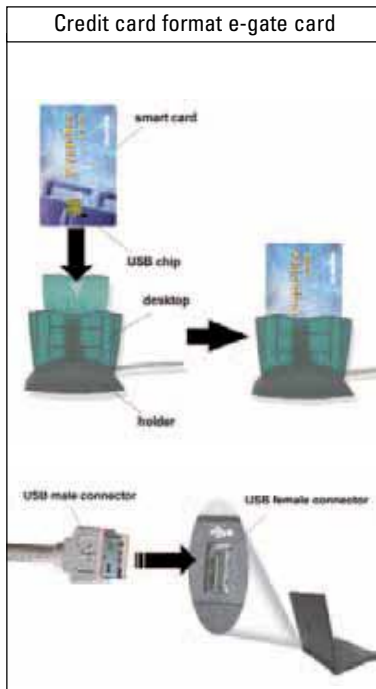
- The standard credit-card format: the e-gate card is a traditional ISO card and USB card in one, a highly versatile digital ID ideal for e-commerce and secure Internet access, for example. The user simply slots this card into its dumb connector, and the system recognizes it as a USB peripheral in the same way as it recognizes a mouse. Out of this connector, it fits in the user's wallet, ready for use in smart card terminals for building access, banking, loyalty, and transport applications, giving users all the personalized advantages of a traditional ISO card.

- The key format: the e-gate card is a cut-down SIM card within a dongle which plugs into the USB port. This card and connector combination is ideal for secure network access and logon, for companies seeking a secure and controllable computing infrastructure for large numbers of personal computer users. This format is particularly adapted for PC users on the move.

Ask for e-gate smart cards ready products



This product is e-gate ready



In both cases, the USB connector creates an electrical contact between the card and the USB receptacle of your PC.

Technical specifications

- Integrate USB interface with internal clock generation
- ISO 7816 compliant
- USB v1.1 compliant

Designed for

- Windows 98, Windows XP, Windows 2000 for USB mode
- MAC OS X
- Integrate with PC/SC and PKCS#11

USB connector

- Desktop with ISO-compliant (7816) smart card form factor
- Key with SIM smart card form factor
- Delivered with USB PC/SC driver



ASIA • TEL: +852 2956 3331
 EUROPE • TEL: +33 1 46 00 66 67
 JAPAN • TEL: +81 3 3434 7300
 NAM • TEL: +1 888 343 5773
 SAM • TEL: 54 11 43 44 51 32

* Mark of Schlumberger

© 2002 SchlumbergerSema

www.schlumbergersema.com

SchlumbergerSema